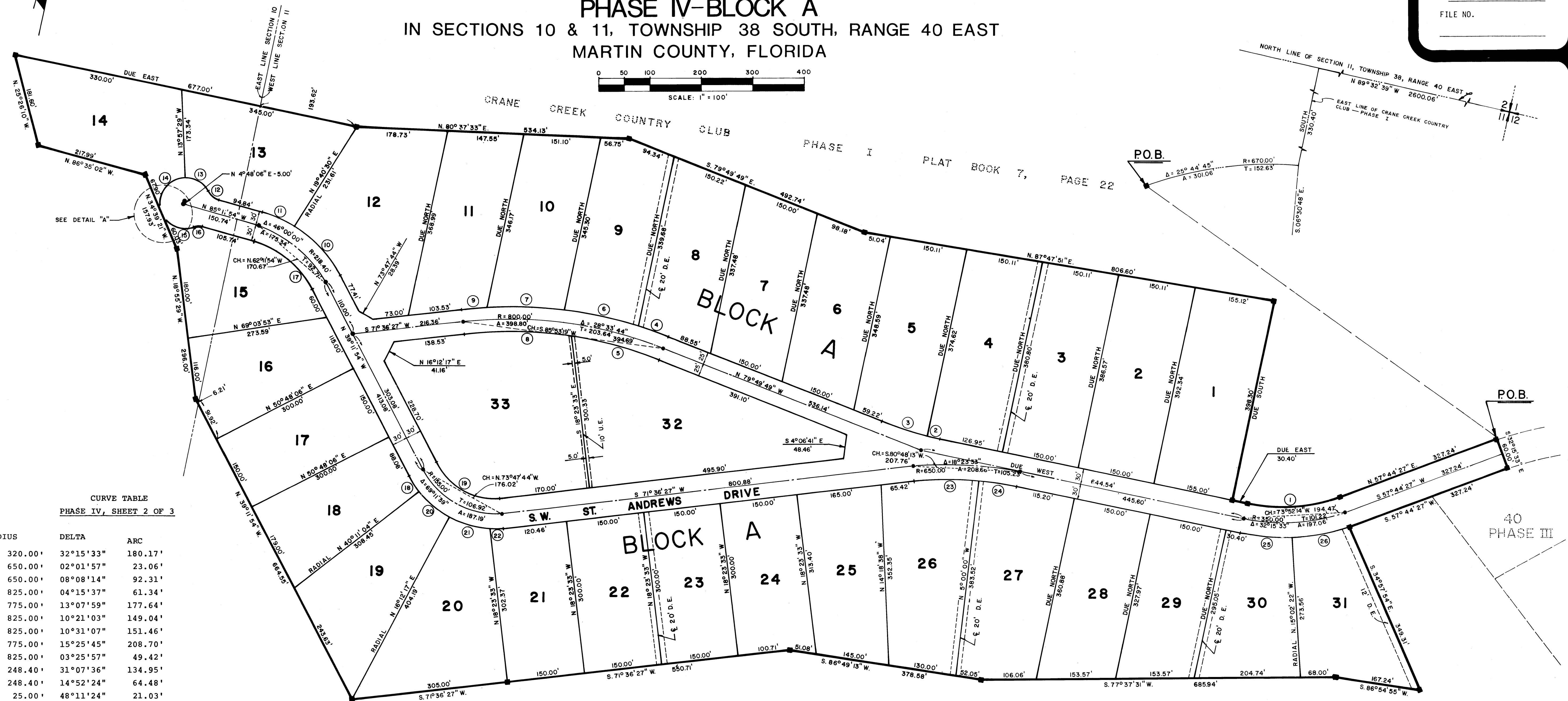
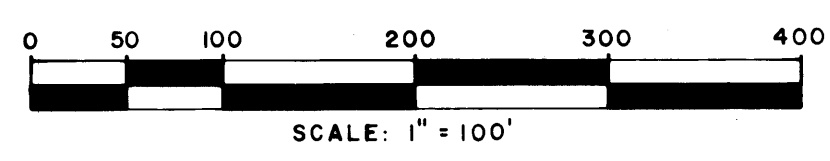


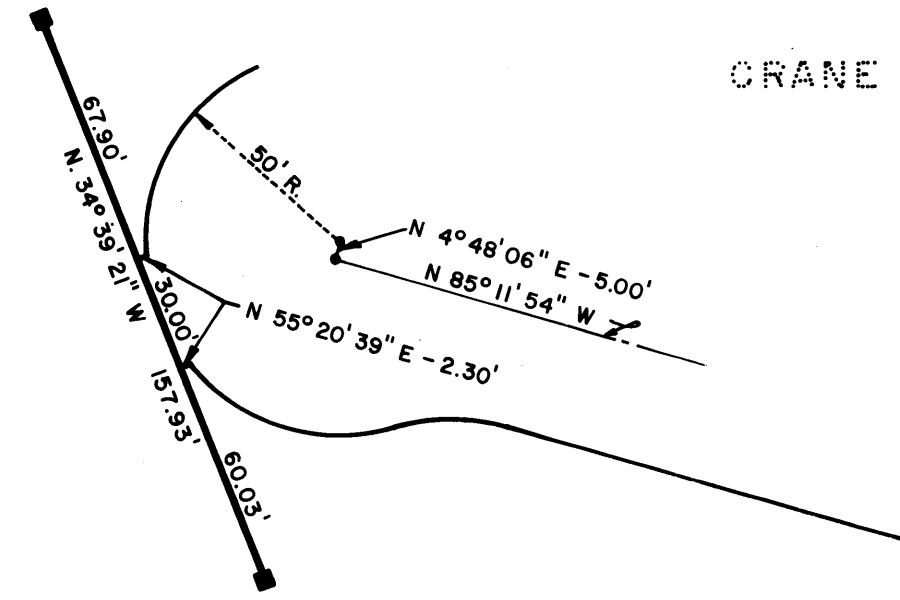
PLAT OF CRANE CREEK COUNTRY CLUB

PHASE IV-BLOCK A
IN SECTIONS 10 & 11, TOWNSHIP 38 SOUTH, RANGE 40 EAST
MARTIN COUNTY, FLORIDA



CURVE TABLE
PHASE IV, SHEET 2 OF 3

RADIUS	DELTA	ARC
1. 320.00'	32°15'33"	180.17'
2. 650.00'	02°01'57"	23.06'
3. 650.00'	08°08'14"	92.31'
4. 825.00'	04°15'37"	61.34'
5. 775.00'	13°07'59"	177.64'
6. 825.00'	10°21'03"	149.04'
7. 825.00'	10°31'07"	151.46'
8. 775.00'	15°25'45"	208.70'
9. 825.00'	03°25'57"	49.42'
10. 248.40'	31°07'36"	134.95'
11. 248.40'	14°52'24"	64.48'
12. 25.00'	48°11'24"	21.03'
13. 50.00'	66°56'59"	58.43'
14. 50.00'	93°14'25"	81.37'
15. 50.00'	69°57'16"	61.05'
16. 25.00'	36°52'10"	16.09'
17. 188.40'	46°00'00"	151.26'
18. 185.00'	10°37'02"	34.28'
19. 125.00'	69°11'39"	150.96'
20. 185.00'	23°58'48"	77.43'
21. 185.00'	25°24'29"	82.04'
22. 185.00'	09°11'20"	29.67'
23. 620.00'	11°30'55"	124.61'
24. 620.00'	06°52'38"	74.42'
25. 380.00'	15°02'22"	99.75'
26. 380.00'	17°13'11"	114.21'



DETAIL "A"
SCALE: 1" = 50'

NOTE:
IN ADDITION TO EASEMENTS SHOWN ON PLAT THERE IS A 10' UTILITY EASEMENT CONTIGUOUS TO ROAD RIGHT OF WAY LINE ACROSS ALL LOTS

SURVEYOR'S NOTES
MONUMENTATION:
■ = DENOTES PERMANENT REFERENCE MONUMENT (P.R.M.)
● = DENOTES PERMANENT CONTROL POINT (P.C.P.)
U.E. = DENOTES UTILITY EASEMENT
D.E. = DENOTES DRAINAGE EASEMENT

LINDAHL, BROWNING & FERRARI, INC.
Consulting Engineers, Planners & Surveyors
426 INDIANTOWN ROAD JUPITER, FLORIDA 33458
951 COLORADO AVENUE STUART, FLORIDA 34994

I, LOUISE V. ISAACS, COUNTY CLERK OF MARTIN COUNTY, FLORIDA, HEREBY CERTIFY THAT THIS PLAT HAS BEEN EXAMINED AND THAT IT COMPLIES IN FORM WITH ALL THE REQUIREMENTS OF THE STATUTES OF FLORIDA PERTAINING TO MAPS AND PLATS, AND THAT THIS PLAT HAS BEEN FILED FOR RECORD IN PLAT BOOK 7, PAGE 75, PUBLIC RECORDS OF MARTIN COUNTY, FLORIDA, THIS DAY OF _____, A.D. 197__.

LOUISE V. ISAACS, CLERK MARTIN COUNTY, FLORIDA
BY _____
FILE NO. _____